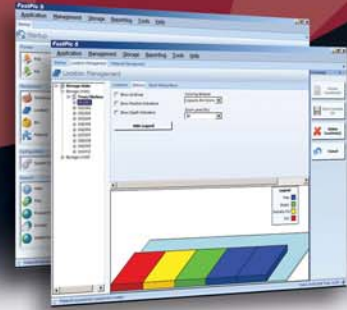


FASTPIC[®] 5 OP

Order Processing



FastPic5[®] OP Software Features

- Integrates any one or combination of: Vertical Lift Modules (VLMs), vertical carousels, horizontal carousels, shelving, rack and pick-to-light
- Rugged SQL database support including MS SQL Server 2005 (Standard, Enterprise and Express), MS SQL 2000 (Standard and Enterprise), MS SQL 7 (Standard and Enterprise), Oracle 9i and higher
- Unlimited number of warehouses, zones and workstations
- Single workstation or networked version
- Configurable host integration for easy, fast and low risk implementation
- Settings are configurable globally, by workstation or by individual user including customized toolbars and lists
- Documents and photos can be associated with material to help visually verify each specific SKU. Ideal for operations concerned with accuracy and/or employee turnover
- Internet based product support for software updates and downloads, problem reports and web-based technical support
- Bar codes can be used to input material and order data as well as scan verify key information such as lot and serial number

Minimum Work Station Requirements:

- OS - Microsoft XP professional (SP2), 2003 Server or Vista
- CPU – Pentium 4 class Processor or better
- Disk Space -1GB of free disk space minimum (more may)
- RAM - 1024 Megabytes of RAM minimum
- Display - 1024 x 768 video resolution
- CDROM drive
- Keyboard and mouse (or compatible pointing device)
- Serial and Ethernet port(s) for device control
- Additional Serial Ports may be needed if using Batching Stations and/or QPI Lights
- Optional Wedge Scanner for reading barcodes
- Backup medium – e.g. local network drive, tape drive, or USB memory stick
- Web access for support is strongly recommended
- Software firewalls need to be disabled for some customers
- Rights - Local administrator access for initial system configuration
- Post-Installation user rights – Local user will need to start and stop services
- Full access privileges to FastPic import folder

FastPic5 Order Processing Software is the business solution designed to grow with your business. From managing a single workstation to multiple workzones, FastPic5 OP software may be configured to maximize your changing organization.

In fact, a company can start with standard shelving and rack system and later grow to pick-to-light and automated storage and retrieval equipment. FastPic5 OP software allows you to manage and control your operations today and tomorrow.

FastPic5 OP Key Benefits

Reduces Inventory - Real time inventory status and detailed managerial reports allow users to manage their operations efficiently. Ideal for facilities implementing JIT and Lean Manufacturing.

Increases Throughput - Whether optimizing and directing pickers with optimized printed lists, or directing automated equipment using light directed picking systems, FastPic5 OP software uses batch picking and put-aways to increase workers efficiencies.

Reduces Floor Space Requirements - Advanced cubing algorithms allows users to maximize every square inch of storage space.

Extends Order Cut-Off Times - Increased efficiencies and being able to prioritize orders by carriers cut-off times allow orders to be processed much later.

99.99% Accuracy - From creating optimized pick lists, to bar code verification to pick & put-to-light, users of FastPic5 OP often see accuracy levels rise to 99.99%.

Increases Customer Satisfaction - By having material on-hand, and orders picked accurately and timely you will be able to offer your customers increased levels of performance.

FASTPIC[®]
systems

800.897.8379 | www.FastPicSystems.com

FastPic5 OP Features:

Material Master Data:

- Material name
- Default storage bin
- Default storage properties
- Material alias
- 5 Material description fields
- 5 Material information fields
- UOM descriptor (i.e. Piece, Case, Liter)
- Reorder points
- Material families

Storage Rules

- Storage Bin selection
- Max stock per bin
- Pack size
- Multiple scan codes (UPC/EAN) per material
- Image support
- Supplemental document support (PDF, CAD, etc)

Material (Inventory) Control:

- Lot number handling
- Serial number handling
- Expiration date handling
- Release date handling
- Production date handling
- Qualification handling
- Zone handling
- Fifo by storage date
- Fifo by expiry date
- Fifo by production date
- Fifo granularity (Days, hours, minutes, etc)
- Lot and serial# validation
- Lot and serial# recording (history)

Location and Bin Management:

- Graphical location and bin configuration
- Material First-Load
- 3D Shelf View
- Permanent and temporary locations by material
- Zone management
- Fill Shelf with Bins to capacity
- Multiple materials per location
- Multiple material attributes per location
- Online and Offline locations
- Bin support
- Container Bin support
- Divisible Bin support
- Import Bin Layouts (XML file)

Pick, Put and Return Material:

- Manual Pick
- Manual Put
- Manual Return (Store to previous fifo date)
- Dynamic Pick Lists
- Dynamic Putaway Lists
- Graphical shelf view during picking and stocking

Count Material - Inventory:

- Count a list of materials
- Count a list of warehouse locations
- Count a random list of locations

Host Interface:

- SAP integration (bi-directional)
- Configurable data formats
- Text file interface
- SQL interface
- Import Materials (New, Update)
- Import Orders
- Export Transaction Results (Confirmations)

Order Handling:

- Order Management dialog
- Pick Orders
- Put Orders
- Return Orders
- Count Orders
- Static Batching (Batch Management Dialog)
- Dynamic Batching (select by order#)
- Continuous Batching
- Host directed batching
- Batch Light Support
- Auto-start orders (1 order at a time)
- Wave Picking (No Consolidation)
- Simple Pick N Pass (No intelligent routing)

Warehouse Management:

- Flexible workstation configurations

Data Management:

- Dynamic database fields
- Transaction History

Reporting and On-Screen Lists:

- Lists and Labels reporting tool
- Integrated Report Designer
- Royalty free license
- Configurable on-screen lists by User, Workstation, Global
- Lists can be copied and customized
- Printable screen lists
- Filter and sort data

Barcode Label Printing:

- Lists and Labels - label printing tool
- Integrated barcode label printing
- On-demand labels
- Label Designer

Usability:

- Material and Order Search
- Context-sensitive Online help
- Configurable startup screen
- Software Configuration by User, Workstation, Global

User Management:

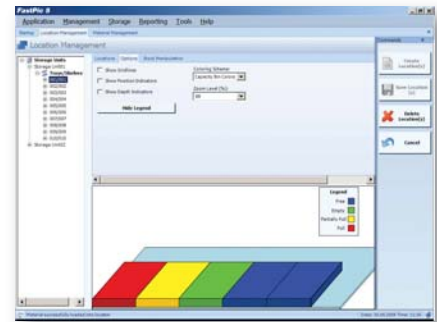
- User controlled access
- Group management
- Windows authentication (single sign-on)
- Password expiration rules
- Carrier access control
- User rights
- Group rights
- Multi-Lingual support
- Ergonomic height by user

Machine Control:

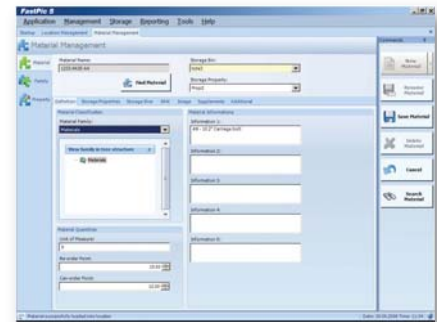
- Machine configuration wizard
- Support for competitive controls

Architecture:

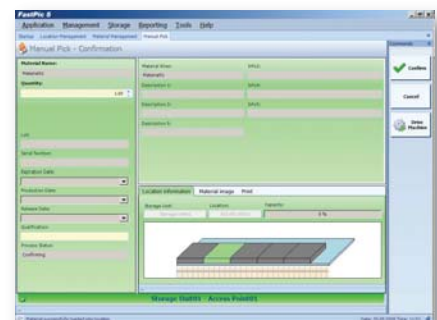
- SOA (service oriented) architecture
- Microsoft .Net technology platform



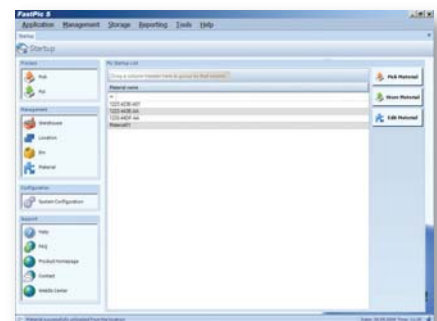
Location Management



Material Management



Pick Dialog



Start Up